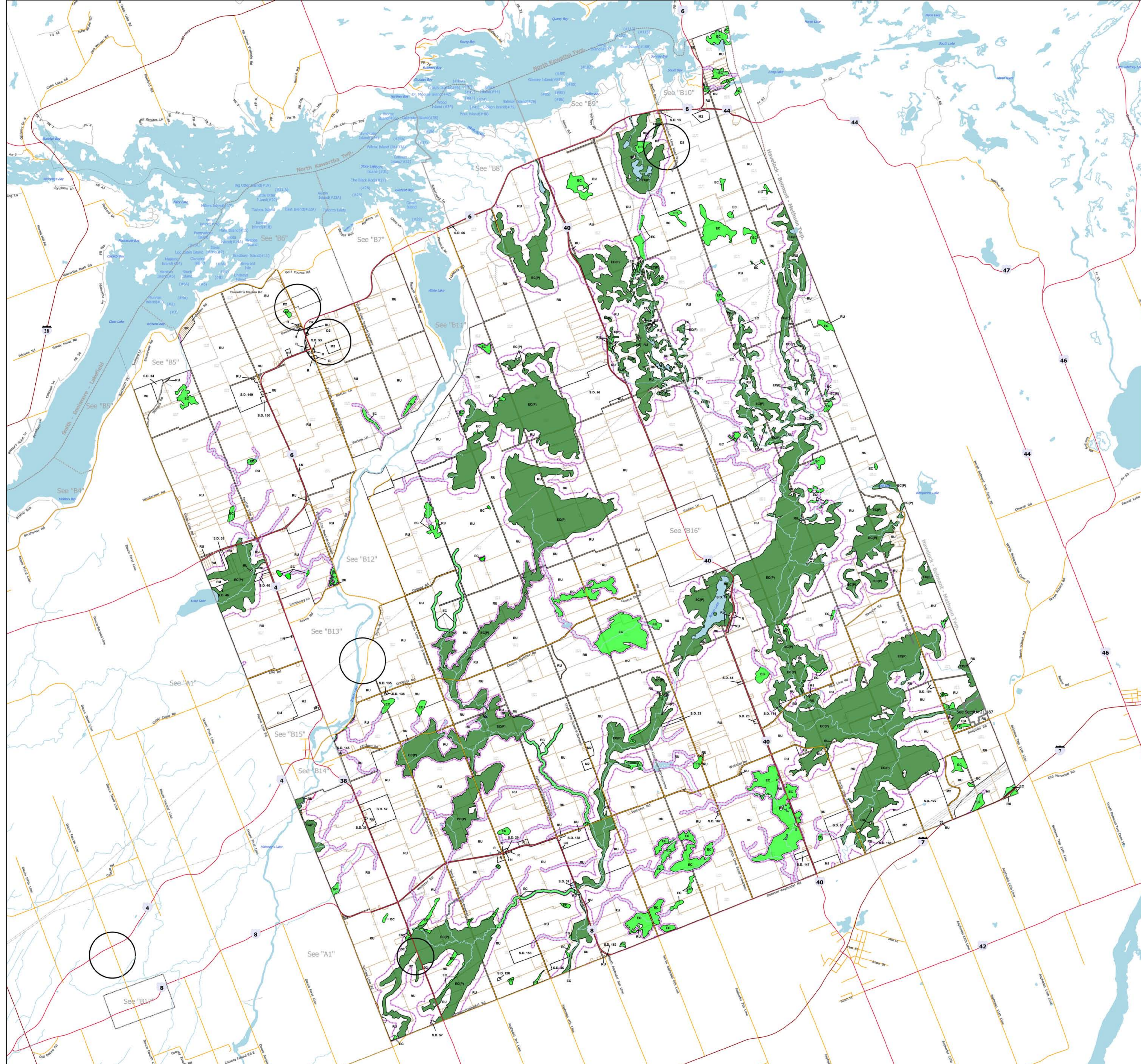
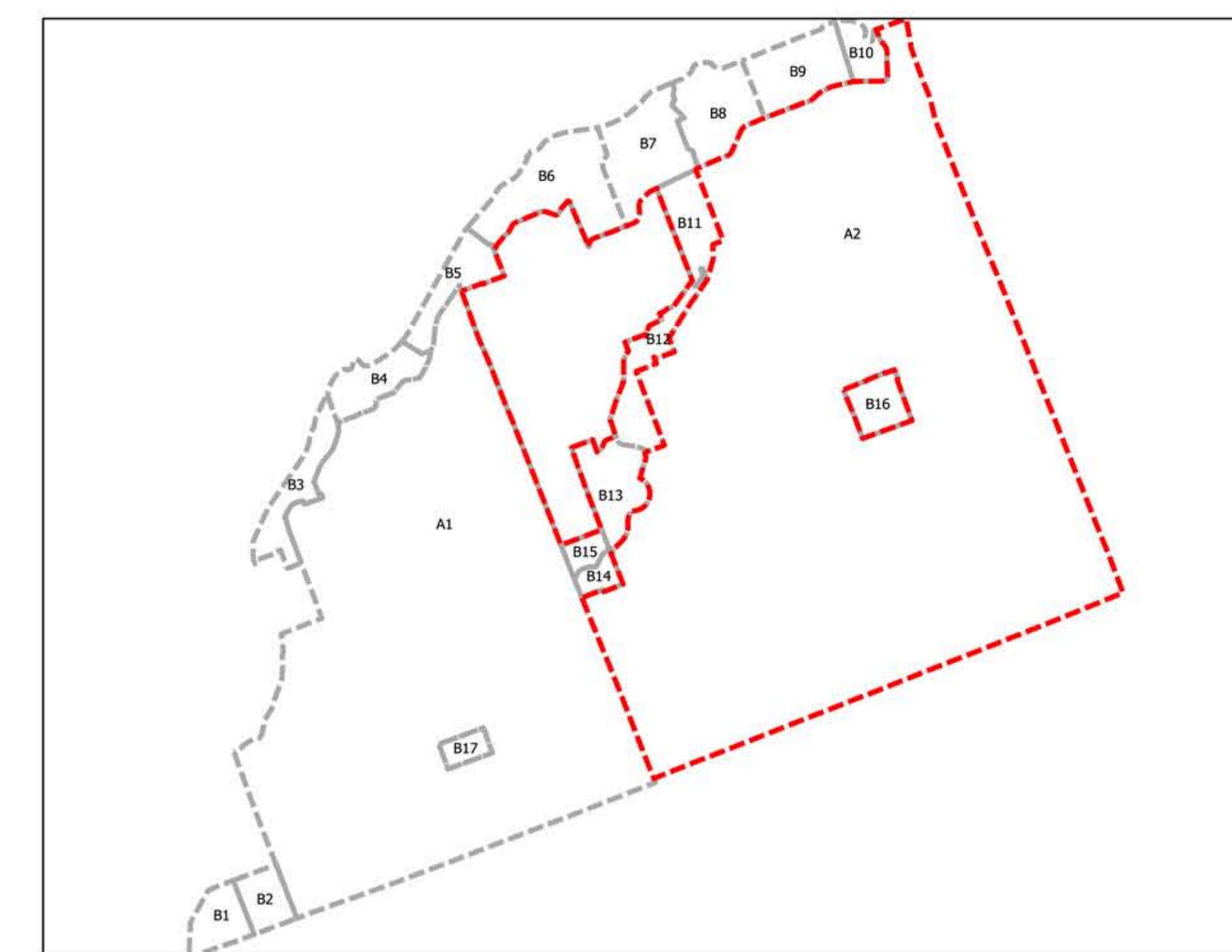


# Schedule A2



**Legend**

- █ Environmental Conservation (EC)
- █ Environmental Conservation - Provincially Significant Wetland (ECPW)
- █ ORCA - Development Control Lines
- █ ORCA - Flood Plain
- █ Ministry of Natural Resources Land (MNR)
- █ Native Reserve (NR)
- █ Lakes
- █ Streams
- █ Cart Path
- █ Recreation Trail
- █ Hydro Corridor
- Roads**
- █ Kings Highway
- █ County Road
- █ Township Road
- █ Private Road

- C1 - Local Commercial**
- C2 - Highway Commercial**
- CT - Commercial Tourist**
- CT - 1 - Commercial Tourist - Trailer Park**
- CTR - 1 - Restricted Commercial Tourist**
- D - Development**
- HR - Hamlet Residential**
- I - Institutional**
- IR - Island Residential**
- LSR - Limited Service Residential**
- M1 - Restricted Industrial**
- M2 - Extractive Industrial**
- M3 - Disposal Industrial**
- NR - Native Reserve**
- OS - Open Space**
- OSR - Restricted Open Space**
- R - Residential**
- RU - Rural**
- SD - Special District**
- SR - Shoreline Residential**

1:35000

Zoning By-Law #  
2010-55

